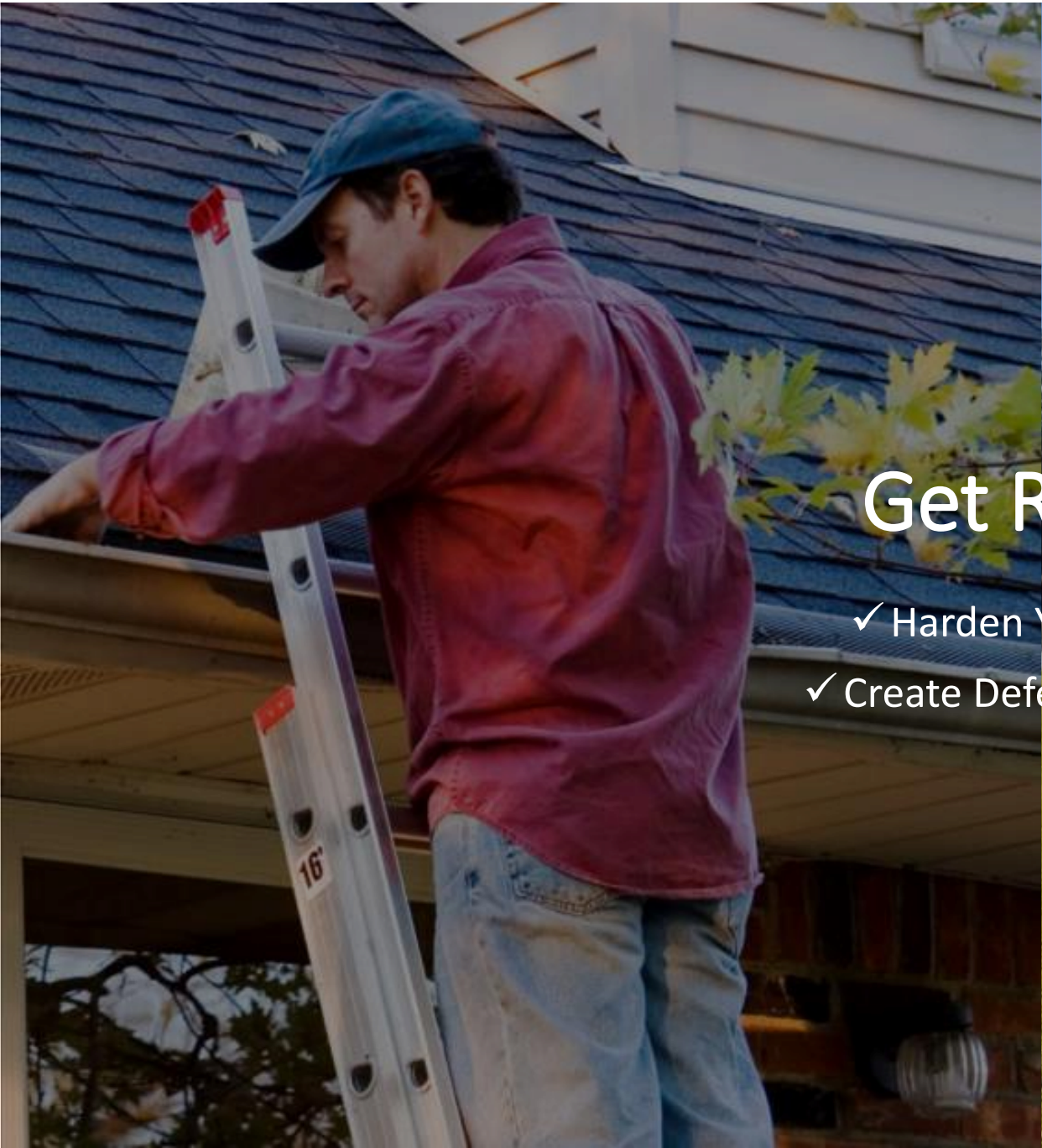


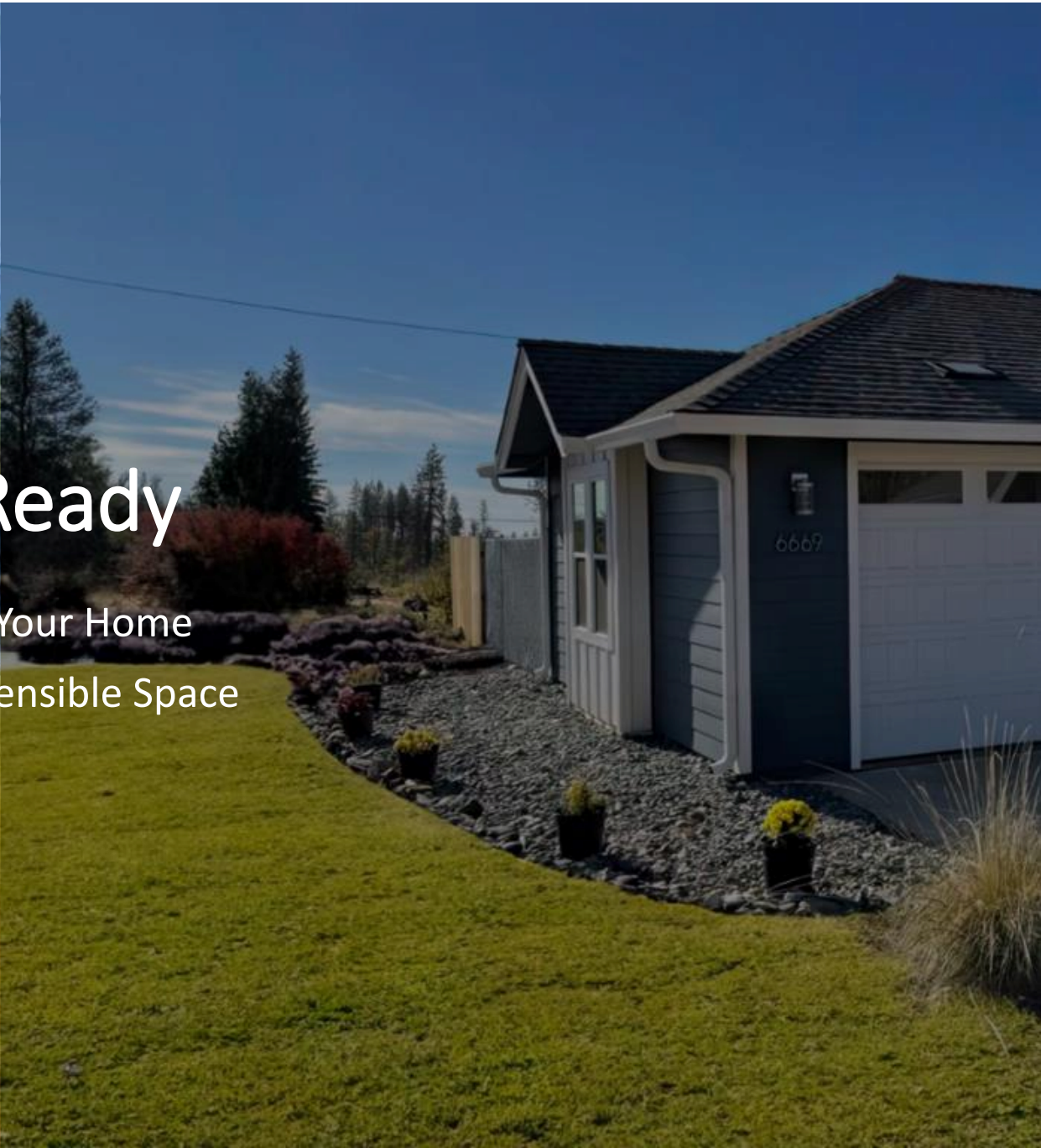


CAL FIRE San Mateo – Santa Cruz Unit



Get Ready

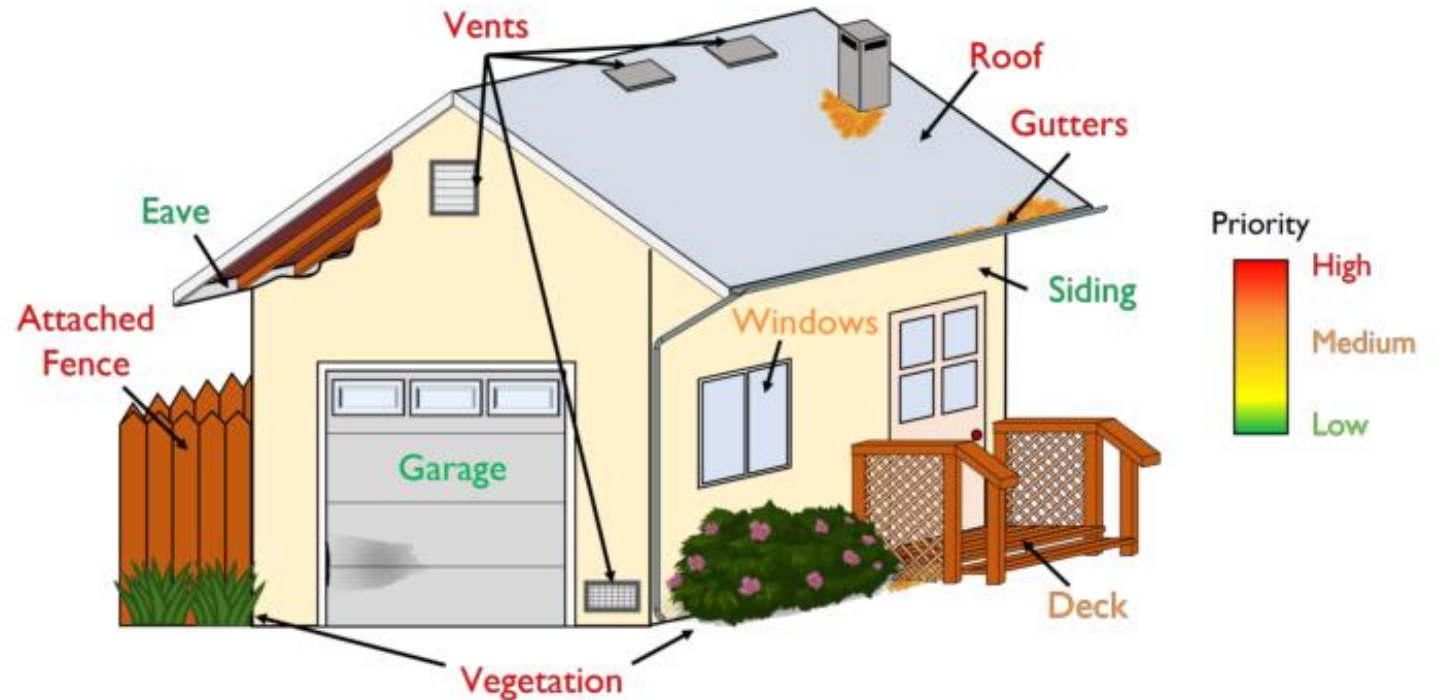
- ✓ Harden Your Home
- ✓ Create Defensible Space



Home Hardening

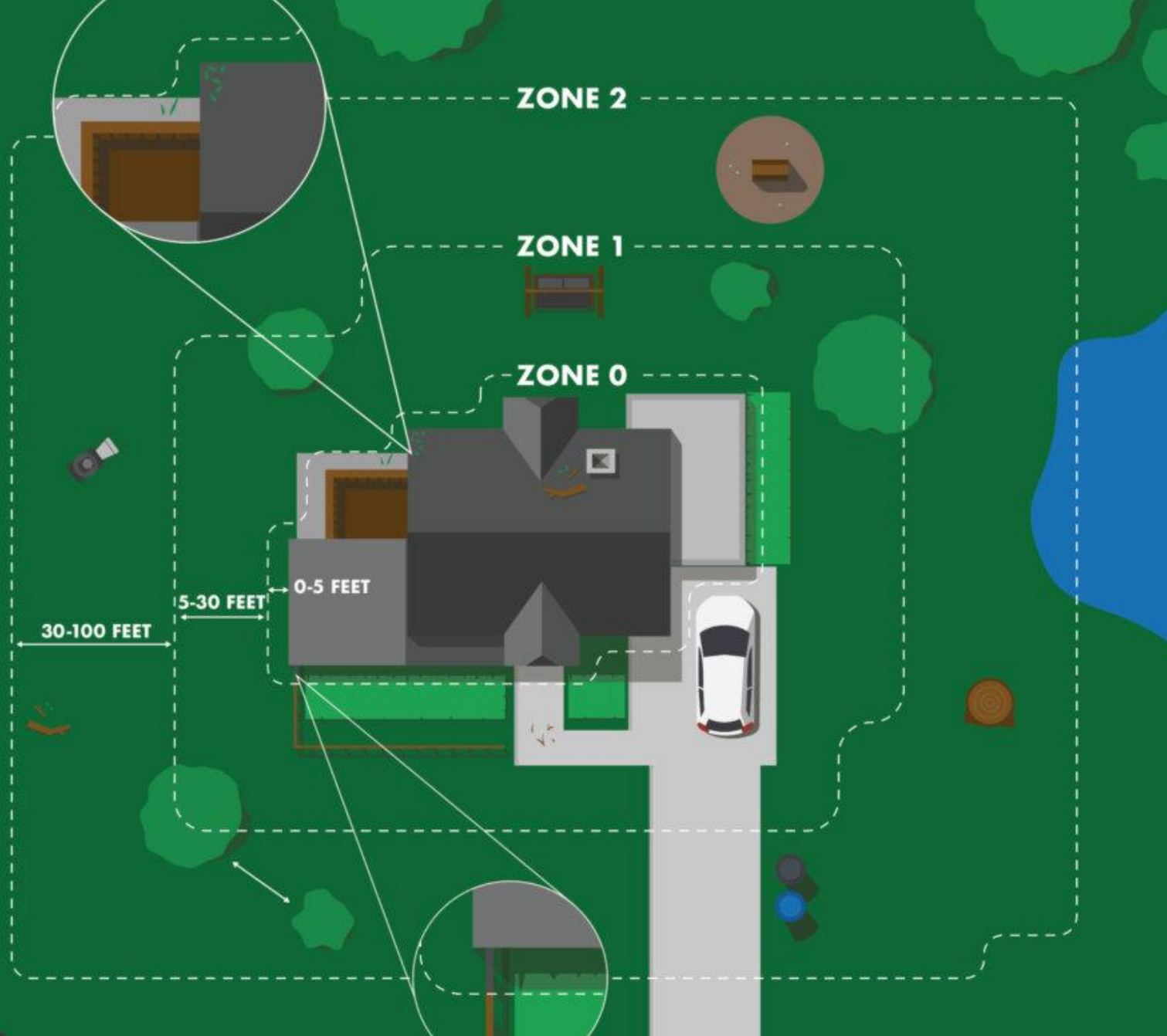
If you are planning any exterior structure renovations, consider hardening your home with materials that have greater fire resistive characteristics.

Visit [Readyforwildfire.org](https://www.readyforwildfire.org) for Home Hardening Tips.



A person wearing a brown jacket and a dark cap stands in a field at night, looking up at a sky filled with numerous bright, streaking light trails. A white building is visible on the right side of the frame.

Defensible Space



Defensible Space Zones

- Zone 0: 0 to 5-feet
- Zone 1: 5 to 30-feet
- Zone 2: 30 to 100-feet

Or up to your property line, whichever comes first.



Zone 0

Ember-Resistant Zone

Zone 0 extends 0 to 5-feet from your home, focusing on intense fuel reduction to protect against ember attacks.



Zone 1

Lean, Clean, and
Green Zone

Zone 1 extends 5 to 30-feet
from your home.

Zone 1 is where spacing of
vegetation and removal of
dead or dying plants is
critical.



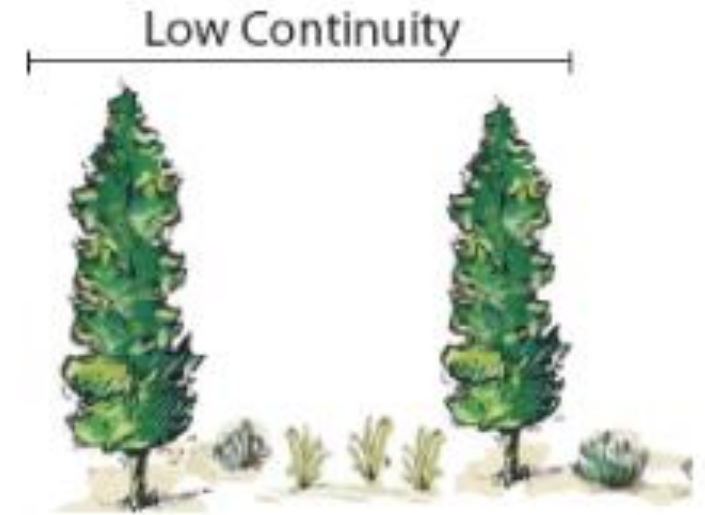
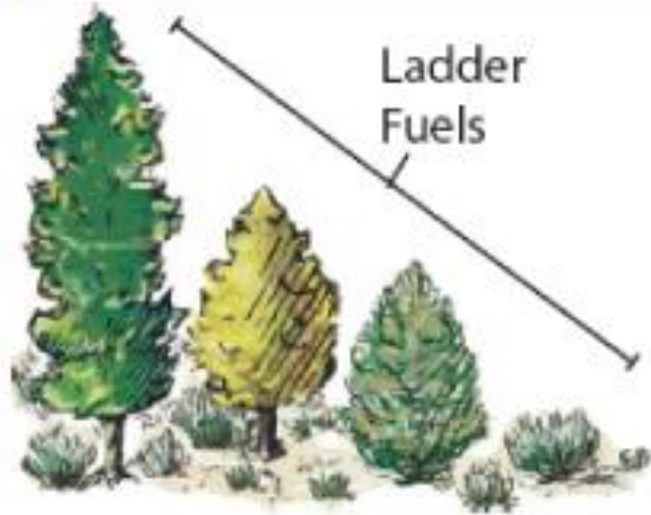
Zone 2

Reduce Fuel Zone

Zone 2 extends 30 to 100-feet from your home. Or up to your property line, which ever comes first.

This is where fuel reduction is critical – trimming grass, ladder fuels, fuel continuity, and having clearance around wood piles.

Ladder Fuels and Continuity



Plant Spacing

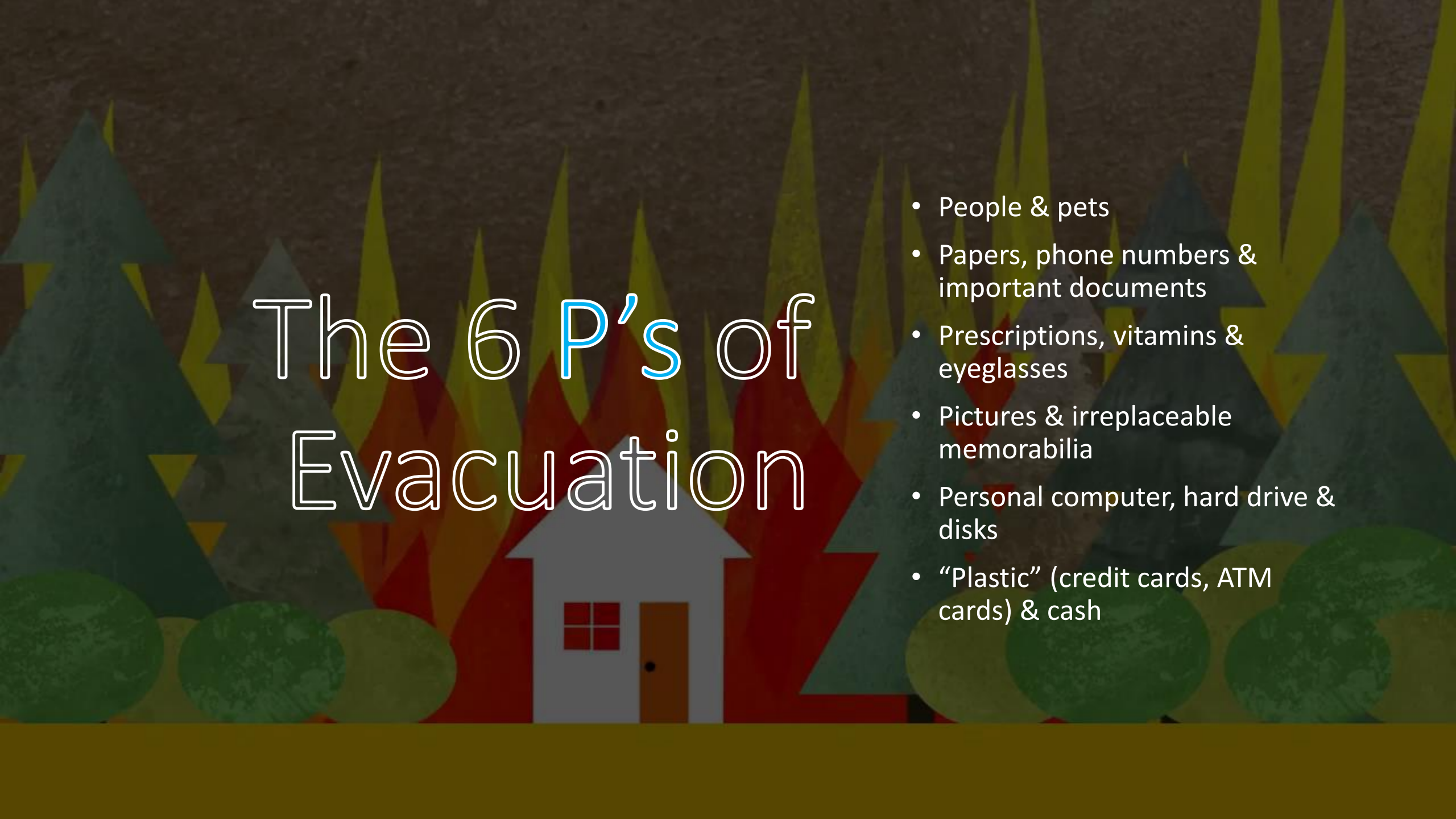
Proper spacing between grass, shrubs, and trees is key in slowing wildfire spread. This spacing varies based on vegetation type, size, and land slope – larger plants on steeper slopes require more space than smaller vegetation on flat areas.



Create a Wildfire Action Plan

- A plan that includes:
 - A designated emergency meeting area
 - Identification of several different escape routes (if possible)
 - Evacuation plan for pets and livestock
 - A family communication plan (Where to meet, Out-Of-Area emergency contact, other important numbers, and evacuation routes).

The Wildfire Action Plan is should be prepared and familiar to all members of your household well in advance of a wildfire.

The background features a dark, textured grey area at the top, transitioning into a stylized illustration of a house on fire. The house is white with a brown door and a red window. Red and orange flames rise from the house. In the foreground, there are several green, rounded bushes. The background is filled with stylized trees in shades of green and yellow, some of which are partially obscured by the flames.

The 6 P's of Evacuation

- People & pets
- Papers, phone numbers & important documents
- Prescriptions, vitamins & eyeglasses
- Pictures & irreplaceable memorabilia
- Personal computer, hard drive & disks
- “Plastic” (credit cards, ATM cards) & cash



ReadyForWildfire.Org